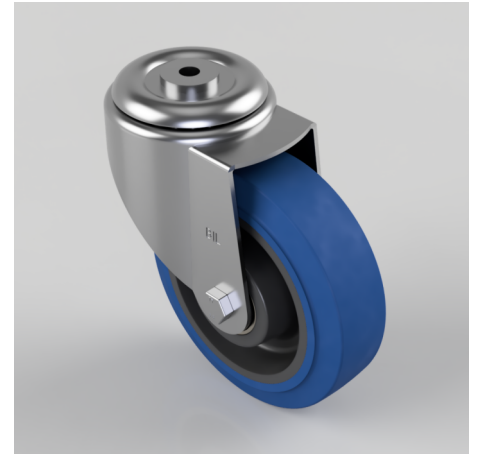


Blue Elastic Rubber 65ShoreA Bolt Hole Swivel Castor 160mm 350kg Load

Product code: BZMM160SRNBJBH12

Pressed steel swivel castor with a 12mm bolt hole fitted with a blue 65 shore A elastic rubber tyre on a black nylon centred wheel with ball bearings. Wheel diameter 160mm, tread width 50mm, overall height 195mm, Load capacity 350kg.



Diameter (mm)	160
Castor Type	Swivel
Fixing Option	Bolt Hole
Height (mm)	195
Wheel Material	Rubber on Nylon
Colour / Shore Hardness	Blue Elastic Rubber on Nylon Rim / 65 Shore A
Temperature Resistance	-30 °C TO +80 °C
Bearing Type	Ball
Load Capacity (kg)	350
Tread (mm)	50
Swivel Radius (mm)	140
Head Dia (mm)	90
Fork Thickness (mm)	3
To Suit Fixing Bolt (mm)	12