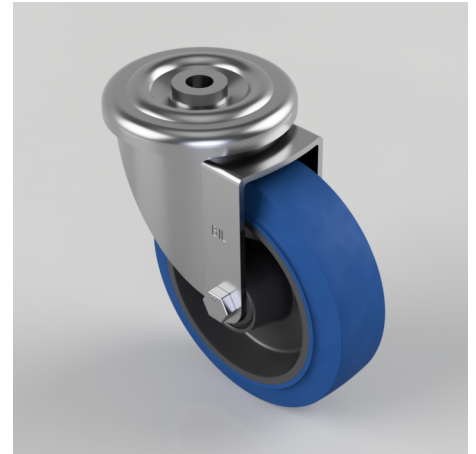


Blue Elastic Rubber 65ShoreA Bolt Hole Swivel Castor 160mm 400kg Load

Product code: BZMM160SRNBBH16

Pressed steel swivel castor with a 16mm bolt hole fitted with a blue 65 shore A elastic rubber tyre on a black nylon centred wheel with roller bearings. Wheel diameter 160mm, tread width 50mm, overall height 193mm, Load capacity 400kg.



Diameter (mm)	160
Castor Type	Swivel
Fixing Option	Bolt Hole
Height (mm)	193
Wheel Material	Rubber on Nylon
Colour / Shore Hardness	Blue Elastic Rubber on Nylon Rim / 65 Shore A
Temperature Resistance	-30 °C TO +80 °C
Bearing Type	Roller
Load Capacity (kg)	400
Tread (mm)	50
Swivel Radius (mm)	133
Head Dia (mm)	114
Fork Thickness (mm)	4
To Suit Fixing Bolt (mm)	16