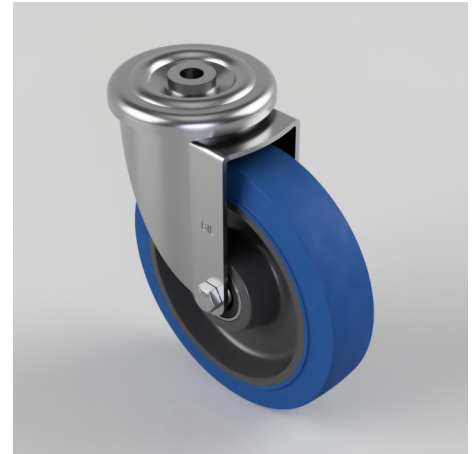


Blue Elastic Rubber 65ShoreA Bolt Hole Swivel Castor 200mm 500kg Load

Product code: BZMM200SRNBJBH16

Pressed steel swivel castor with a 16mm bolt hole fitted with a blue 65 shore A elastic rubber tyre on a black nylon centred wheel with ball bearings. Wheel diameter 200mm, tread width 50mm, overall height 238mm, Load capacity 500kg.



Diameter (mm)	200
Castor Type	Swivel
Fixing Option	Bolt Hole
Height (mm)	238
Wheel Material	Rubber on Nylon
Colour / Shore Hardness	Blue Elastic Rubber on Nylon Rim / 65 Shore A
Temperature Resistance	-30 °C TO +80 °C
Bearing Type	Ball
Load Capacity (kg)	500
Tread (mm)	50
Swivel Radius (mm)	153
Head Dia (mm)	114
Fork Thickness (mm)	4
To Suit Fixing Bolt (mm)	16

BIL GROUP LTD

Porte Marsh Road, Calne, Wiltshire, SN11 9BW

Registered in England No: 2603821

VAT Reg: GB572705729

