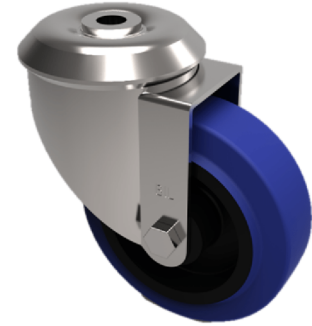


## Blue Elastic Rubber 65ShoreA Bolt Hole Swivel Castor 80mm 150kg Load

**Product code: SSMM80SRNBH12**



Grade 304 Pressed stainless steel swivel castor with 12mm bolt hole fixing fitted with a 65 shore A blue elastic rubber tyre on black nylon centred wheel with Plain Bore. Wheel diameter 80mm, tread width 35mm, overall height 105mm. Load capacity 150kg. REACH compliant also PAH-Free rubber to confirm to EU-directive 2005/69/EC

Diameter (mm)	80
Fixing Option	Bolt Hole
Castor Type	Swivel
Height (mm)	105
Wheel Material	Rubber on Nylon
Colour / Shore Hardness	Blue Elastic Rubber on Nylon Rim / 65 Shore A
Bearing Type	Plain
Tread (mm)	35
Fork Thickness (mm)	2
To Suit Fixing Bolt (mm)	12
Load Capacity (kg)	150
Temperature Resistance	-30 °C TO +80 °C
Head Dia (mm)	76
Swivel Radius (mm)	74