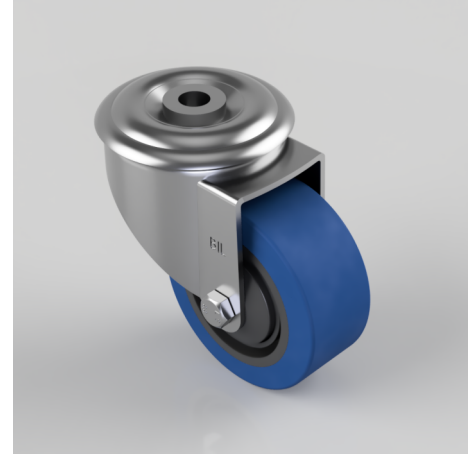


Blue Elastic Rubber 65ShoreA Bolt Hole Swivel Castor 80mm 150kg Load

Product code: BZMM80SRNBJBH12

Pressed steel swivel castor with 12mm bolt hole fitted with a blue 65 shore A elastic rubber tyre on black nylon centred wheel with roller bearing. Wheel diameter 80mm, tread width 35mm, overall height 105mm, Load capacity 150kg. REACH compliant also PAH-Free rubber to confirm to EU-directive 2005/69/EC



Diameter (mm)	80
Castor Type	Swivel
Fixing Option	Bolt Hole
Height (mm)	105
Wheel Material	Rubber on Nylon
Colour / Shore Hardness	Blue Elastic Rubber on Nylon Rim / 65 Shore A
Temperature Resistance	-30 °C TO +80 °C
Bearing Type	Ball
Load Capacity (kg)	150
Tread (mm)	35
Swivel Radius (mm)	78
Head Dia (mm)	76
Fork Thickness (mm)	2.5
To Suit Fixing Bolt (mm)	12

BIL GROUP LTD

Porte Marsh Road, Calne, Wiltshire, SN11 9BW

Registered in England No: 2603821

VAT Reg: GB572705729

