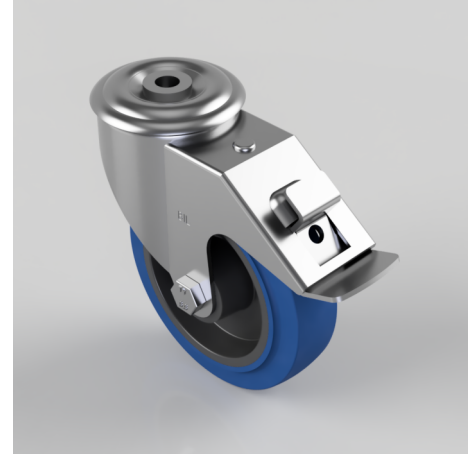


Blue Elastic Rubber 65ShoreA Bolt Hole Swivel Castor Brake 125mm 200kg

Product code: BZMM125SRNBBH12SWB

Pressed steel swivel castor with a bolt hole fixing fitted with a blue 65 shore A elastic rubber tyre on black nylon centred wheel with a roller bearing with total lock brake. Wheel diameter 125mm, tread width 36mm, overall height 155mm, bolt hole 12mm. Load capacity 200kg. REACH compliant also PAH-Free rubber to confirm to EU-directive 2005/69/EC



Diameter (mm)	125
Castor Type	Swivel with Total Lock Brake
Fixing Option	Bolt Hole
Height (mm)	155
Wheel Material	Rubber on Nylon
Colour / Shore Hardness	Blue Elastic Rubber on Nylon Rim / 65 Shore A
Temperature Resistance	-30 °C TO +80 °C
Bearing Type	Roller
Load Capacity (kg)	200
Tread (mm)	36
Swivel Radius (mm)	134
Head Dia (mm)	76
Fork Thickness (mm)	2.5
To Suit Fixing Bolt (mm)	12

BIL GROUP LTD

Porte Marsh Road, Calne, Wiltshire, SN11 9BW

Registered in England No: 2603821

VAT Reg: GB572705729

