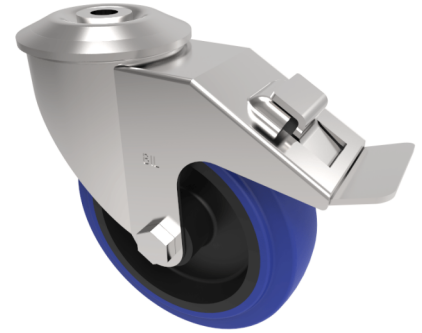


Blue Elastic Rubber 65ShoreA Bolt Hole Swivel Castor Brake 125mm 200kg

Product code: SSMM125SRNBBH12SWB

Grade 304 Pressed stainless steel swivel castor with a bolt hole fixing fitted with a blue 65 shore A elastic rubber tyre on a nylon centred wheel with a roller bearing and total lock brake. Wheel diameter 125mm, tread width 36mm, overall height 155mm, bolthole 12mm. Load capacity 200kg



Diameter (mm)	125
Fixing Option	Bolt Hole
Castor Type	Swivel with Total Lock Brake
Height (mm)	155
Wheel Material	Rubber on Nylon
Colour / Shore Hardness	Blue Elastic Rubber on Nylon Rim / 65 Shore A
Bearing Type	Roller
Tread (mm)	36
Fork Thickness (mm)	2
To Suit Fixing Bolt (mm)	12
Load Capacity (kg)	250
Temperature Resistance	-30 °C TO +80 °C
Head Dia (mm)	76
Swivel Radius (mm)	123

BIL GROUP LTD

Porte Marsh Road, Calne, Wiltshire, SN11 9BW

Registered in England No: 2603821

VAT Reg: GB572705729

