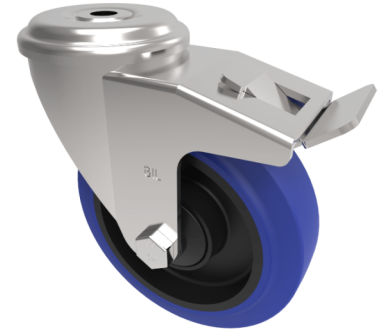


## Blue Elastic Rubber 65ShoreA Bolt Hole Swivel Castor Brake 125mm 250kg

**Product code: BZEH125SRNBJBH12SWB**



Pressed steel swivel castor with 12mm bolt hole fixing fitted with a 65 Shore A blue elastic rubber tyre on black nylon centre with single ball bearing and retaining caps and a total lock brake. Wheel diameter 125mm, tread width 36mm, overall height 155mm, Load capacity 250kg. REACH compliant also PAH-Free rubber to confirm to EU-directive 2005/69/EC

Diameter (mm)	125
Castor Type	Swivel with Total Lock Brake
Fixing Option	Bolt Hole
Height (mm)	155
Wheel Material	Rubber on Nylon
Colour / Shore Hardness	Blue Elastic Rubber on Nylon Rim / 65 Shore A
Temperature Resistance	-30 °C TO +80 °C
Bearing Type	Ball
Load Capacity (kg)	250
Tread (mm)	36
Swivel Radius (mm)	120
Head Dia (mm)	76
Fork Thickness (mm)	3
To Suit Fixing Bolt (mm)	12

### BIL GROUP LTD

Porte Marsh Road, Calne, Wiltshire, SN11 9BW

Registered in England No: 2603821

VAT Reg: GB572705729

