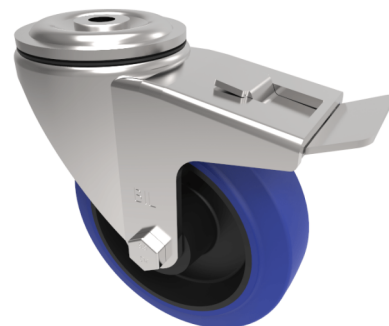


Blue Elastic Rubber 65ShoreA Bolt Hole Swivel Castor Brake 125mm 275kg

Product code: BZWH125SRNBJBH12SWB

Pressed steel swivel castor with a 12mm bolt hole fitted with a 65 shore A blue elastic rubber tyred wheel with a black nylon centre with ball bearing and a total lock brake. Wheel diameter 125mm, tread width 50mm, overall height 165mm, Load capacity 275kg. REACH compliant also PAH-Free rubber to confirm to EU-directive 2005/69/EC



Diameter (mm)	125
Castor Type	Swivel with Total Lock Brake
Fixing Option	Bolt Hole
Height (mm)	166
Wheel Material	Rubber on Nylon
Colour / Shore Hardness	Blue Elastic Rubber on Nylon Rim / 65 Shore A
Temperature Resistance	-30 °C TO +80 °C
Bearing Type	Ball
Load Capacity (kg)	275
Tread (mm)	50
Swivel Radius (mm)	138
Head Dia (mm)	76
Fork Thickness (mm)	3.5
To Suit Fixing Bolt (mm)	12

BIL GROUP LTD

Porte Marsh Road, Calne, Wiltshire, SN11 9BW

Registered in England No: 2603821

VAT Reg: GB572705729

