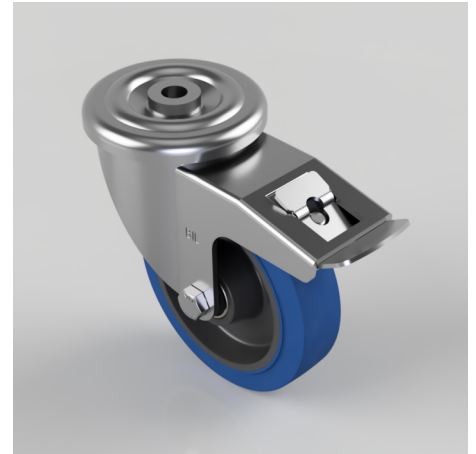


Blue Elastic Rubber 65ShoreA Bolt Hole Swivel Castor Brake 150mm 300kg

Product code: BZMM150SRNBJBH16SWB

Pressed steel swivel castor with a 16mm bolt hole fitted with a blue 65 shore A elastic rubber tyre on a black nylon centred wheel with ball bearings and a total lock brake. Wheel diameter 150mm, tread width 40mm, overall height 188mm, Load capacity 300kg.



Diameter (mm)	150
Castor Type	Swivel with Total Lock Brake
Fixing Option	Bolt Hole
Height (mm)	188
Wheel Material	Rubber on Nylon
Colour / Shore Hardness	Blue Elastic Rubber on Nylon Rim / 65 Shore A
Temperature Resistance	-30 °C TO +80 °C
Bearing Type	Ball
Load Capacity (kg)	300
Tread (mm)	40
Swivel Radius (mm)	168
Head Dia (mm)	114
Fork Thickness (mm)	4
To Suit Fixing Bolt (mm)	16