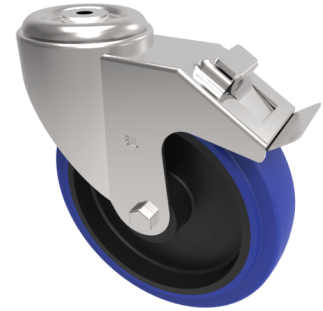


Blue Elastic Rubber 65ShoreA Bolt Hole Swivel Castor Brake 160mm 400kg

Product code: BZMM160SRNBBH16SWB



Pressed steel swivel castor with a 16mm bolt hole fitted with a blue 65 shore A elastic rubber tyre on a black nylon centred wheel with roller bearings and a total lock brake. Wheel diameter 160mm, tread width 50mm, overall height 193mm, Load capacity 400kg.

Diameter (mm)	160
Castor Type	Swivel with Total Lock Brake
Fixing Option	Bolt Hole
Height (mm)	193
Wheel Material	Rubber on Nylon
Colour / Shore Hardness	Blue Elastic Rubber on Nylon Rim / 65 Shore A
Temperature Resistance	-30 °C TO +80 °C
Bearing Type	Roller
Load Capacity (kg)	400
Tread (mm)	50
Swivel Radius (mm)	167
Head Dia (mm)	114
Fork Thickness (mm)	4
To Suit Fixing Bolt (mm)	16

BIL GROUP LTD

Porte Marsh Road, Calne, Wiltshire, SN11 9BW

Registered in England No: 2603821

VAT Reg: GB572705729

