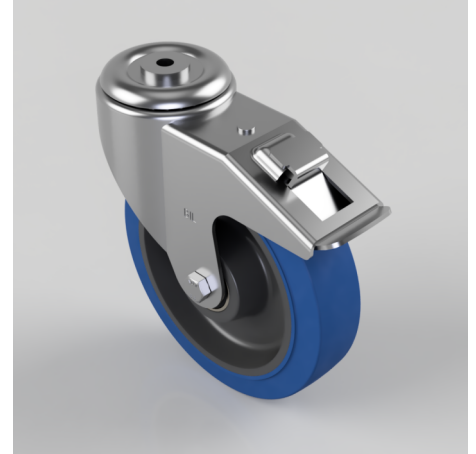


## Blue Elastic Rubber 65ShoreA Bolt Hole Swivel Castor Brake 200mm 350kg

**Product code: BZMM200SRNBJBH12SWB**

Pressed steel swivel castor with a 12mm bolt hole fitted with a blue 65 shore A elastic rubber tyre on a black nylon centred wheel with ball bearings and a total lock brake. Wheel diameter 200mm, tread width 50mm, overall height 235mm, Load capacity 350kg.



Diameter (mm)	200
Castor Type	Swivel with Total Lock Brake
Fixing Option	Bolt Hole
Height (mm)	235
Wheel Material	Rubber on Nylon
Colour / Shore Hardness	Blue Elastic Rubber on Nylon Rim / 65 Shore A
Temperature Resistance	-30 °C TO +80 °C
Bearing Type	Ball
Load Capacity (kg)	350
Tread (mm)	50
Swivel Radius (mm)	183
Head Dia (mm)	90
Fork Thickness (mm)	3
To Suit Fixing Bolt (mm)	12