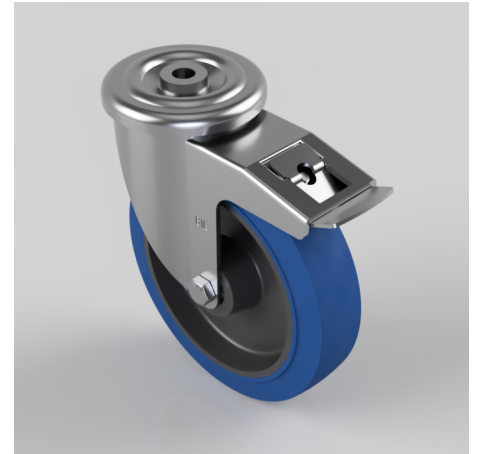


## Blue Elastic Rubber 65ShoreA Bolt Hole Swivel Castor Brake 200mm 500kg

**Product code: BZMM200SRNBBH16SWB**

Pressed steel swivel castor with a 16mm bolt hole fitted with a blue 65 shore A elastic rubber tyre on a black nylon centred wheel with roller bearings and a total lock brake. Wheel diameter 200mm, tread width 50mm, overall height 238mm, Load capacity 350kg.



Diameter (mm)	200
Castor Type	Swivel with Total Lock Brake
Fixing Option	Bolt Hole
Height (mm)	238
Wheel Material	Rubber on Nylon
Colour / Shore Hardness	Blue Elastic Rubber on Nylon Rim / 65 Shore A
Temperature Resistance	-30 °C TO +80 °C
Bearing Type	Roller
Load Capacity (kg)	500
Tread (mm)	50
Swivel Radius (mm)	167
Head Dia (mm)	114
Fork Thickness (mm)	4
To Suit Fixing Bolt (mm)	16