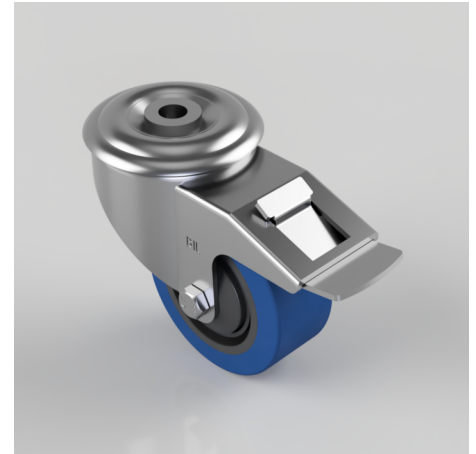


Blue Elastic Rubber 65ShoreA Bolt Hole Swivel Castor Brake 80mm 150kg

Product code: BZMM80SRNBJBH12SWB

Pressed steel swivel castor with a 12mm bolt hole fitted with a 65 shore A blue elastic rubber tyre on black nylon centred wheel with ball bearing and a total lock brake. Wheel diameter 80mm, tread width 35mm, overall height 105mm, Load capacity 150kg. REACH compliant also PAH-Free rubber to confirm to EU-directive 2005/69/EC



Diameter (mm)	80
Castor Type	Swivel with Total Lock Brake
Fixing Option	Bolt Hole
Height (mm)	105
Wheel Material	Rubber on Nylon
Colour / Shore Hardness	Blue Elastic Rubber on Nylon Rim / 65 Shore A
Temperature Resistance	-30 °C TO +80 °C
Bearing Type	Ball
Load Capacity (kg)	150
Tread (mm)	35
Swivel Radius (mm)	112
Head Dia (mm)	76
Fork Thickness (mm)	2.5
To Suit Fixing Bolt (mm)	12