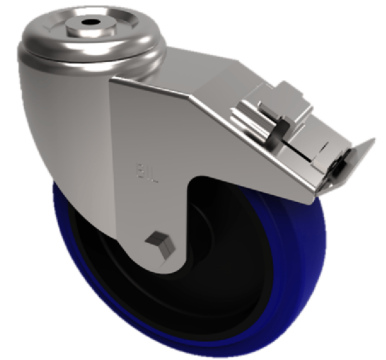


Blue Elastic Rubber 65ShoreA Bolt Hole Swivel Castor Brake 80mm 150kg

Product code: SSMM80SRNBH12SWB

Grade 304 Pressed stainless steel swivel castor with 12mm bolt hole fixing fitted with a 65 shore A blue elastic rubber tyre on black nylon centred wheel with Plain Bore and swivel wheel brake. Wheel diameter 80mm, tread width 35mm, overall height 105mm. Load capacity 150kg. REACH compliant also PAH-Free rubber to confirm to EU-directive 2005/69/EC



Diameter (mm)	80
Fixing Option	Bolt Hole
Castor Type	Swivel with Total Lock Brake
Height (mm)	105
Wheel Material	Rubber on Nylon
Colour / Shore Hardness	Blue Elastic Rubber on Nylon Rim / 65 Shore A
Bearing Type	Plain
Tread (mm)	35
Fork Thickness (mm)	2
To Suit Fixing Bolt (mm)	12
Load Capacity (kg)	150
Temperature Resistance	-30 °C TO +80 °C
Head Dia (mm)	76
Swivel Radius (mm)	111

BIL GROUP LTD

Porte Marsh Road, Calne, Wiltshire, SN11 9BW

Registered in England No: 2603821

VAT Reg: GB572705729

