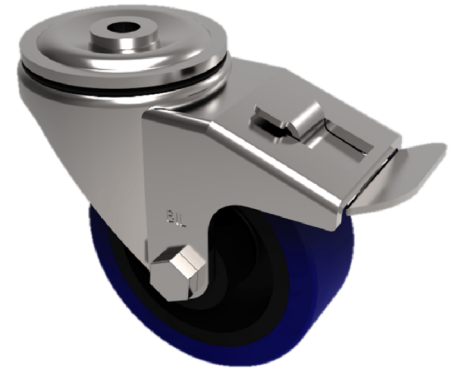


Blue Elastic Rubber 65ShoreA Bolt Hole Swivel Castor Brake 80mm 150kg

Product code: BZH80SRNBJBH12SWB



Pressed steel swivel castor with a 12mm bolt hole fitted with a blue 65 shore A elastic rubber tyre wheel with a black nylon centre with a ball bearing and a total lock brake. Wheel diameter 80mm, Tread width 35mm, Overall Height 110mm, Load Capacity 150kg. REACH compliant also PAH-Free rubber to confirm to EU-directive 2005/69/EC

Diameter (mm)	80
Castor Type	Swivel with Total Lock Brake
Fixing Option	Bolt Hole
Height (mm)	110
Wheel Material	Rubber on Nylon
Colour / Shore Hardness	Blue Elastic Rubber on Nylon Rim / 65 Shore A
Temperature Resistance	-30 °C TO +80 °C
Bearing Type	Ball
Load Capacity (kg)	150
Tread (mm)	35
Swivel Radius (mm)	125
Head Dia (mm)	76
Fork Thickness (mm)	4
To Suit Fixing Bolt (mm)	12