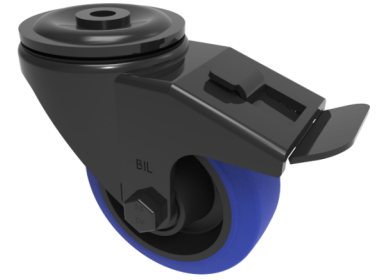


## Blue Elastic Rubber 65ShoreA Bolthole Brake 100mm 200kg Load

**Product code: BLKH100SRNBJBH12SWB**



Pressed steel black painted swivel castor with a 12mm bolt hole fitted with a 65 Shore A blue elastic rubber nylon centred wheel with a single ball bearing with retaining caps and a total lock brake. Wheel diameter 100mm, tread width 36mm, overall height 128mm, Load capacity 200kg.REACH compliant also PAH-Free rubber to confirm to EU-directive 2005/69/EC. (Catalogue SKU BLKH100SRNBJH12SWB)

Diameter (mm)	100
Castor Type	Swivel with Total Lock Brake
Fixing Option	Bolt Hole
Height (mm)	128
Wheel Material	Rubber on Nylon
Colour / Shore Hardness	Blue Elastic Rubber on Nylon Rim / 65 Shore A
Temperature Resistance	-30 °C TO +80 °C
Bearing Type	Ball
Load Capacity (kg)	200
Tread (mm)	36
Swivel Radius (mm)	115
Head Dia (mm)	76
Fork Thickness (mm)	3
To Suit Fixing Bolt (mm)	8

### BIL GROUP LTD

Porte Marsh Road, Calne, Wiltshire, SN11 9BW

Registered in England No: 2603821

VAT Reg: GB572705729

