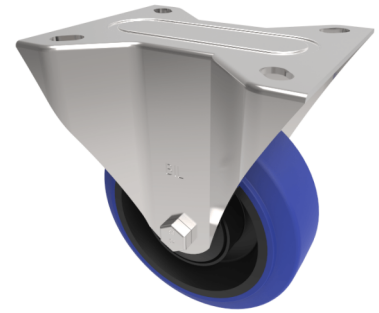


Blue Elastic Rubber 65ShoreA Plate Fixed Castor 100mm 180kg Load

Product code: SSMMF100SRNB

Grade 304 Pressed stainless steel fixed castor with a top plate fixing fitted with a blue 65 shore A elastic rubber tyre black nylon centred wheel with a roller bearing. Wheel diameter 100mm, tread width 36mm, overall height 128mm, top plate 105mm x 85mm, hole centres 80mm x 60mm. Load capacity 180kg REACH compliant also PAH-Free rubber to confirm to EU-directive 2005/69/EC



Diameter (mm)	100
Fixing Option	Plate
Castor Type	Fixed
Height (mm)	128
Wheel Material	Rubber on Nylon
Colour / Shore Hardness	Blue Elastic Rubber on Nylon Rim / 65 Shore A
Bearing Type	Roller
Tread (mm)	36
Fork Thickness (mm)	2
To Suit Fixing Bolt (mm)	8
Load Capacity (kg)	200
Temperature Resistance	-30 °C TO +80 °C
Plate Size (mm)	105 X 85
Hole Centres (mm)	80 X 60
Top Plate Thickness (mm)	2

BIL GROUP LTD

Porte Marsh Road, Calne, Wiltshire, SN11 9BW

Registered in England No: 2603821

VAT Reg: GB572705729

