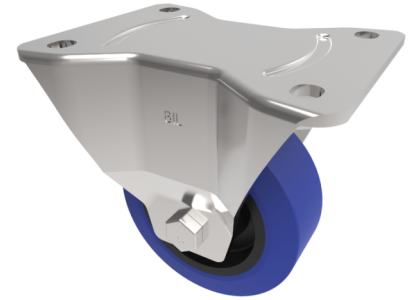


Blue Elastic Rubber 65ShoreA Plate Fixed Castor 100mm 200kg Load

Product code: BZPHF100SRNB



Pressed steel fixed castor with a top plate fixing fitted with a blue 65 shore A elastic rubber on nylon centred wheel with a roller bearing. Wheel diameter 100mm, tread width 36mm, overall height 132mm, top plate 135mm x 110mm, hole centres 105mm x 80/75mm. Load capacity 200kg. REACH compliant also PAH-Free rubber to confirm to EU-directive 2005/69/EC

Diameter (mm)	100
Castor Type	Fixed
Fixing Option	Plate
Height (mm)	128
Wheel Material	Rubber on Nylon
Colour / Shore Hardness	Blue Elastic Rubber on Nylon Rim / 65 Shore A
Temperature Resistance	-30 °C TO +80 °C
Bearing Type	Roller
Load Capacity (kg)	200
Tread (mm)	36
Plate Size (mm)	135 x 115
Hole Centres (mm)	105 x 80/75
Top Plate Thickness (mm)	4
Fork Thickness (mm)	4
To Suit Fixing Bolt (mm)	10

BIL GROUP LTD

Porte Marsh Road, Calne, Wiltshire, SN11 9BW

Registered in England No: 2603821

VAT Reg: GB572705729

