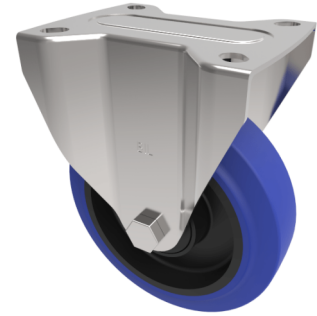


Blue Elastic Rubber 65ShoreA Plate Fixed Castor 125mm 200kg Load

Product code: SSMMF125SRNB

Grade 304 Pressed stainless steel fixed castor with a top plate fixing fitted with a blue 65 shore A elastic rubber tyre nylon centred wheel with a roller bearing. Wheel diameter 125mm, tread width 36mm, overall height 155mm, top plate 105mm x 84mm, hole centres 80mm x 60mm. Load capacity 200kg.



Diameter (mm)	125
Fixing Option	Plate
Castor Type	Fixed
Height (mm)	155
Wheel Material	Rubber on Nylon
Colour / Shore Hardness	Blue Elastic Rubber on Nylon Rim / 65 Shore A
Bearing Type	Roller
Tread (mm)	36
Fork Thickness (mm)	2
To Suit Fixing Bolt (mm)	8
Load Capacity (kg)	250
Temperature Resistance	-30 °C TO +80 °C
Plate Size (mm)	105 X 85
Hole Centres (mm)	80 X 60
Top Plate Thickness (mm)	2

BIL GROUP LTD

Porte Marsh Road, Calne, Wiltshire, SN11 9BW

Registered in England No: 2603821

VAT Reg: GB572705729

