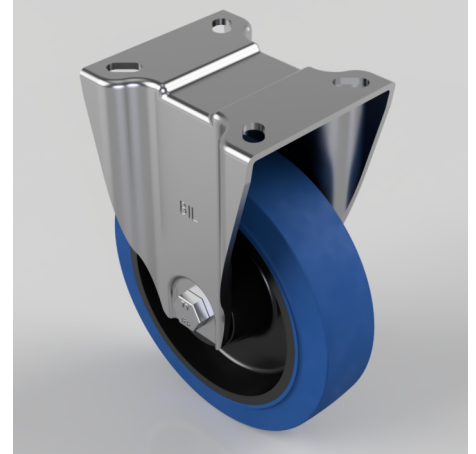


Blue Elastic Rubber 65ShoreA Plate Fixed Castor 150mm 300kg Load

Product code: BZPHFL150SRNBJ

Pressed steel fixed castor with a top plate fixing fitted with blue elastic rubber tyred black nylon centred wheel with ball bearings. Wheel diameter 150mm, tread width 40mm, overall height 190mm, top plate 105mm x 92mm, hole centres 80mm x 60mm. Load capacity 300Kg. REACH compliant also PAH-Free rubber to confirm to EU-directive 2005/69/EC



Diameter (mm)	150
Castor Type	Fixed
Fixing Option	Plate
Height (mm)	190
Wheel Material	Rubber on Nylon
Colour / Shore Hardness	Blue Elastic Rubber on Nylon Rim / 65 Shore A
Temperature Resistance	-30 °C TO +80 °C
Bearing Type	Ball
Load Capacity (kg)	300
Tread (mm)	40
Plate Size (mm)	105 x 92
Hole Centres (mm)	80 X 60
Top Plate Thickness (mm)	3.5
Fork Thickness (mm)	3.5
To Suit Fixing Bolt (mm)	10

BIL GROUP LTD

Porte Marsh Road, Calne, Wiltshire, SN11 9BW

Registered in England No: 2603821

VAT Reg: GB572705729

