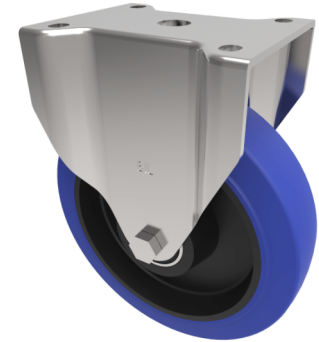


## Blue Elastic Rubber 65ShoreA Plate Fixed Castor 200mm 500kg Load

**Product code: BZPHF200SRNB**

Pressed steel fixed castor with a top plate fixing fitted with a blue 65 shore A elastic rubber tyre on a black nylon centre with ball bearings. Wheel diameter 200mm, tread width 50mm, overall height 238mm, top plate 135mm x 115mm, hole centres 105mm x 80/75mm. Load capacity 500kg.



Diameter (mm)	200
Castor Type	Fixed
Fixing Option	Plate
Height (mm)	238
Wheel Material	Rubber on Nylon
Colour / Shore Hardness	Blue Elastic Rubber on Nylon Rim / 65 Shore A
Temperature Resistance	-30 °C TO +80 °C
Bearing Type	Ball
Load Capacity (kg)	500
Tread (mm)	50
Plate Size (mm)	135 x 115
Hole Centres (mm)	105 x 80/75
Top Plate Thickness (mm)	4
Fork Thickness (mm)	4
To Suit Fixing Bolt (mm)	10

### BIL GROUP LTD

Porte Marsh Road, Calne, Wiltshire, SN11 9BW

Registered in England No: 2603821

VAT Reg: GB572705729

