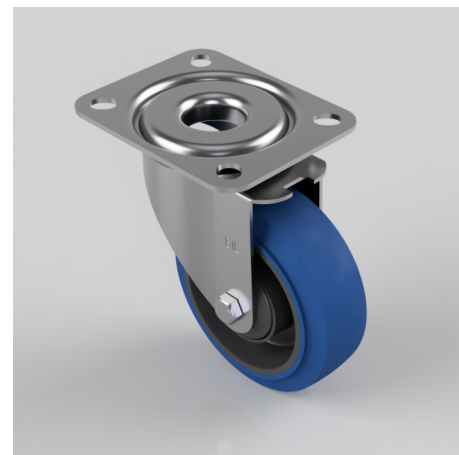


## Blue Elastic Rubber 65ShoreA Plate Swivel Castor 100mm 180kg Load

**Product code: BZMM100SRNB**

Pressed steel swivel castor with a flat top plate fixing fitted with a 65 shore A blue elastic rubber tyre on a black nylon centre wheel with ball bearing. Wheel diameter 100mm, tread width 36mm, overall height 128mm, plate size 105mm x 85mm, hole centres 80mm x 60mm. Load capacity 180kg. REACH compliant also PAH-Free rubber to confirm to EU-directive 2005/69/EC



Diameter (mm)	100
Castor Type	Swivel
Fixing Option	Plate
Height (mm)	128
Wheel Material	Rubber on Nylon
Colour / Shore Hardness	Blue Elastic Rubber on Nylon Rim / 65 Shore A
Temperature Resistance	-30 °C TO +80 °C
Bearing Type	Ball
Load Capacity (kg)	180
Tread (mm)	36
Swivel Radius (mm)	84
Plate Size (mm)	105 X 85
Hole Centres (mm)	80 X 60
Top Plate Thickness (mm)	2.5
Fork Thickness (mm)	2
To Suit Fixing Bolt (mm)	8

## BIL GROUP LTD

Porte Marsh Road, Calne, Wiltshire, SN11 9BW

Registered in England No: 2603821

VAT Reg: GB572705729

