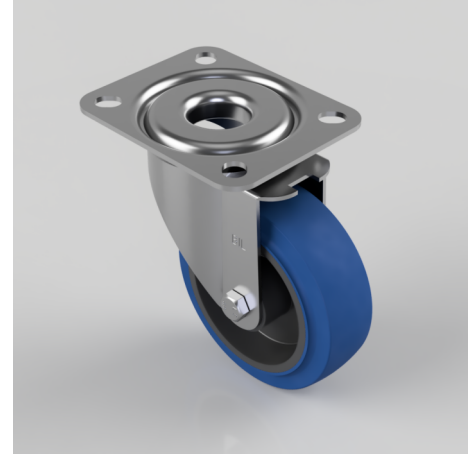


Blue Elastic Rubber 65ShoreA Plate Swivel Castor 100mm 180kg Load

Product code: BZMM100SRNB

Pressed steel swivel castor with a flat top plate fixing fitted with a blue 65 shore A elastic rubber tyre on a black nylon centre wheel with roller bearing. Wheel diameter 100mm, tread width 36mm, overall height 128mm, plate size 105mm x 85mm, hole centres 80mm x 60mm. Load capacity 180kg. REACH compliant also PAH-Free rubber to confirm to EU-directive 2005/69/EC



| | |
|--------------------------|---|
| Diameter (mm) | 100 |
| Castor Type | Swivel |
| Fixing Option | Plate |
| Height (mm) | 128 |
| Wheel Material | Rubber on Nylon |
| Colour / Shore Hardness | Blue Elastic Rubber on Nylon Rim / 65 Shore A |
| Temperature Resistance | -30 °C TO +80 °C |
| Bearing Type | Roller |
| Load Capacity (kg) | 180 |
| Tread (mm) | 36 |
| Swivel Radius (mm) | 84 |
| Plate Size (mm) | 105 X 85 |
| Hole Centres (mm) | 80 X 60 |
| Top Plate Thickness (mm) | 2 |
| Fork Thickness (mm) | 2 |
| To Suit Fixing Bolt (mm) | 8 |

BIL GROUP LTD

Porte Marsh Road, Calne, Wiltshire, SN11 9BW

Registered in England No: 2603821

VAT Reg: GB572705729

