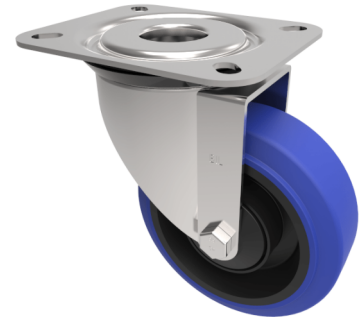


Blue Elastic Rubber 65ShoreA Plate Swivel Castor 100mm 180kg Load

Product code: BZRMM100SRNB



Pressed steel swivel castor with a flat top plate fixing fitted with a blue 65 shore A elastic rubber tyre on a black nylon centre wheel with roller bearing. Wheel diameter 100mm, tread width 36mm, overall height 128mm, top plate 104mm x 80mm, hole centres 80mm x 60mm or 72mm x 52mm, Load capacity 180kg. REACH compliant also PAH-Free rubber to confirm to EU-directive 2005/69/EC

Diameter (mm)	100
Castor Type	Swivel
Fixing Option	Plate
Height (mm)	128
Wheel Material	Rubber on Nylon
Colour / Shore Hardness	Blue Elastic Rubber on Nylon Rim / 65 Shore A
Temperature Resistance	-30 °C TO +80 °C
Bearing Type	Roller
Load Capacity (kg)	180
Tread (mm)	36
Swivel Radius (mm)	84
Plate Size (mm)	104 x 80
Hole Centres (mm)	80/72 x 60/52
Top Plate Thickness (mm)	2.5
Fork Thickness (mm)	2.5
To Suit Fixing Bolt (mm)	8