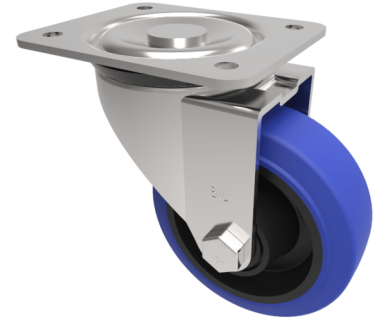


## Blue Elastic Rubber 65ShoreA Plate Swivel Castor 100mm 200kg Load

**Product code: BZEH100SRNBLP**



Pressed steel swivel castor with flat top plate fixing fitted with a blue 65 shore A elastic rubber tyre on black nylon centre with roller bearing. Wheel diameter 100mm, tread width 36mm, overall height 128mm, top plate 135mm x 110mm, hole centres 105mm x 80mm or 116mm x 92.5mm Load capacity 250kg. REACH compliant also PAH-Free rubber to confirm to EU-directive 2005/69/EC

Diameter (mm)	100
Castor Type	Swivel
Fixing Option	Plate
Height (mm)	128
Wheel Material	Rubber on Nylon
Colour / Shore Hardness	Blue Elastic Rubber on Nylon Rim / 65 Shore A
Temperature Resistance	-30 °C TO +80 °C
Bearing Type	Roller
Load Capacity (kg)	200
Tread (mm)	36
Swivel Radius (mm)	90
Plate Size (mm)	135 x 110
Hole Centres (mm)	105/116 x 80/64
Top Plate Thickness (mm)	3
Fork Thickness (mm)	3
To Suit Fixing Bolt (mm)	10

### BIL GROUP LTD

Porte Marsh Road, Calne, Wiltshire, SN11 9BW

Registered in England No: 2603821

VAT Reg: GB572705729

