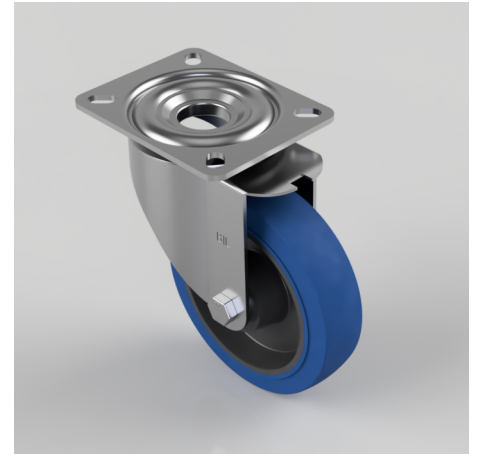


## Blue Elastic Rubber 65ShoreA Plate Swivel Castor 150mm 300kg Load

**Product code: BZMM150SRNB**

Pressed steel swivel castor with a top plate fixing fitted with a blue 65 shore A elastic rubber tyre on a black nylon centred wheel with roller bearings. Wheel diameter 150mm, tread width 40mm, overall height 190mm, top plate 135mm x 110mm, hole centres 105mm x 80mm. Load capacity 300kg.



Diameter (mm)	150
Castor Type	Swivel
Fixing Option	Plate
Height (mm)	190
Wheel Material	Rubber on Nylon
Colour / Shore Hardness	Blue Elastic Rubber on Nylon Rim / 65 Shore A
Temperature Resistance	-30 °C TO +80 °C
Bearing Type	Roller
Load Capacity (kg)	300
Tread (mm)	40
Swivel Radius (mm)	128
Plate Size (mm)	135 x 110
Hole Centres (mm)	105 x 80/75
Top Plate Thickness (mm)	3
Fork Thickness (mm)	3
To Suit Fixing Bolt (mm)	10