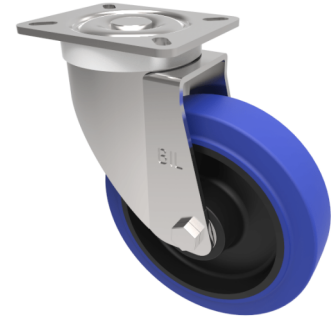


## Blue Elastic Rubber 65ShoreA Plate Swivel Castor 150mm 300kg Load

**Product code: BZPHL150SRNB**



Pressed steel swivel castor with a top plate fixing fitted with 65 shore A blue elastic rubber tyred black nylon centred wheel with roller bearings. Wheel diameter 150mm, tread width 40mm, overall height 190mm, top plate 105mm x 86mm, hole centres 80mm x 60mm. Load capacity 300Kg. REACH compliant also PAH-Free rubber to confirm to EU-directive 2005/69/EC

|                          |   |
|--------------------------|---|
| Diameter (mm)            | 150   |
| Castor Type              | Swivel  |
| Fixing Option            | Plate   |
| Height (mm)              | 190   |
| Wheel Material           | Rubber on Nylon                               |
| Colour / Shore Hardness  | Blue Elastic Rubber on Nylon Rim / 65 Shore A |
| Temperature Resistance   | -30 °C TO +80 °C                              |
| Bearing Type             | Roller  |
| Load Capacity (kg)       | 300   |
| Tread (mm)               | 40  |
| Swivel Radius (mm)       | 130   |
| Plate Size (mm)          | 105 x 86                                      |
| Hole Centres (mm)        | 80 X 60                                       |
| Top Plate Thickness (mm) | 4   |
| Fork Thickness (mm)      | 3.5   |
| To Suit Fixing Bolt (mm) | 8   |

### BIL GROUP LTD

Porte Marsh Road, Calne, Wiltshire, SN11 9BW

Registered in England No: 2603821

VAT Reg: GB572705729

