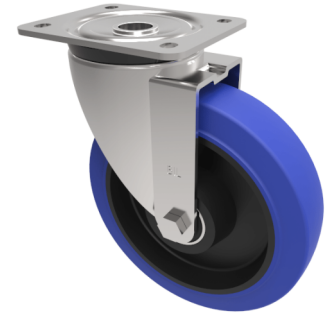


## Blue Elastic Rubber 65ShoreA Plate Swivel Castor 200mm 500kg Load

**Product code: BZPH200SRNBJ**

Pressed steel swivel castor with a top plate fixing fitted with a blue 65 shore A elastic rubber tyre on black nylon centred wheel with ball bearings. Wheel diameter 200mm, tread width 50mm, overall height 238mm, plate size 135mm x 110mm, hole centres 105mm x 80/75mm. Load capacity 500kg.



Diameter (mm)	200
Castor Type	Swivel
Fixing Option	Plate
Height (mm)	238
Wheel Material	Rubber on Nylon
Colour / Shore Hardness	Blue Elastic Rubber on Nylon Rim / 65 Shore A
Temperature Resistance	-30 °C TO +80 °C
Bearing Type	Ball
Load Capacity (kg)	500
Tread (mm)	50
Swivel Radius (mm)	153
Plate Size (mm)	135 x 110
Hole Centres (mm)	105 x 80/75
Top Plate Thickness (mm)	5
Fork Thickness (mm)	5
To Suit Fixing Bolt (mm)	10