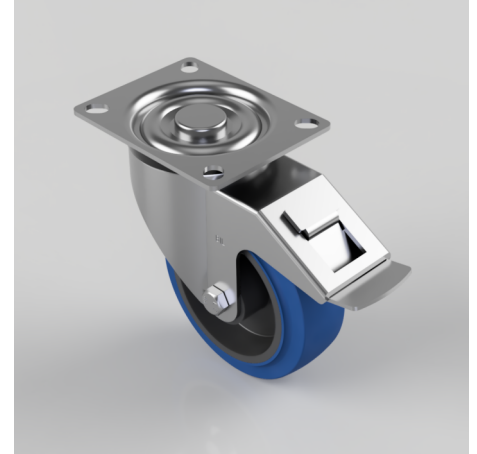


Blue Elastic Rubber 65ShoreA Plate Swivel Castor Brake 100mm 180kg Load

Product code: BZGMM100SRNBSWB

Pressed steel swivel castor with a top plate fixing fitted with 65 shore A blue elastic rubber on nylon wheel with a roller bearing and total lock brake. Wheel diameter 100mm, tread width 36mm, overall height 128mm, top plate 98mm x 78mm, hole centres 82/78mm x 62/58mm. Load capacity 200kg. REACH compliant also PAH-Free rubber to confirm to EU-directive 2005/69/EC



Diameter (mm)	100
Castor Type	Swivel with Total Lock Brake
Fixing Option	Plate
Height (mm)	128
Wheel Material	Rubber on Nylon
Colour / Shore Hardness	Blue Elastic Rubber on Nylon Rim / 65 Shore A
Temperature Resistance	-30 °C TO +80 °C
Bearing Type	Roller
Load Capacity (kg)	180
Tread (mm)	36
Swivel Radius (mm)	118
Plate Size (mm)	98 X 78
Hole Centres (mm)	82/78 X 62/58
Top Plate Thickness (mm)	2.5
Fork Thickness (mm)	2.5
To Suit Fixing Bolt (mm)	8

BIL GROUP LTD

Porte Marsh Road, Calne, Wiltshire, SN11 9BW

Registered in England No: 2603821

VAT Reg: GB572705729

