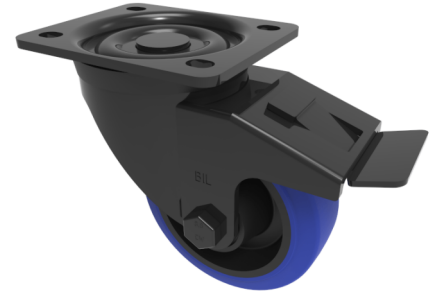


Blue Elastic Rubber 65ShoreA Plate Swivel Castor Brake 100mm 200kg Load

Product code: BLKH100SRNBJSWB



Pressed steel black painted swivel castor with a top plate fixing fitted with a 65 Shore A blue elastic rubber nylon centred wheel with a single ball bearing with retaining caps and a total lock brake. Wheel diameter 100mm, tread width 36mm, overall height 128mm, plate size 105mm x 86mm, hole centres 80mm x 60mm. Load capacity 200kg. REACH compliant also PAH-Free rubber to confirm to EU-directive 2005/69/EC

Diameter (mm)	100
Castor Type	Swivel with Total Lock Brake
Fixing Option	Plate
Height (mm)	128
Wheel Material	Rubber on Nylon
Colour / Shore Hardness	Blue Elastic Rubber on Nylon Rim / 65 Shore A
Temperature Resistance	-30 °C TO +80 °C
Bearing Type	Ball
Load Capacity (kg)	200
Tread (mm)	36
Swivel Radius (mm)	115
Plate Size (mm)	105 x 86
Hole Centres (mm)	80 X 60
Top Plate Thickness (mm)	3
Fork Thickness (mm)	3
To Suit Fixing Bolt (mm)	8

BIL GROUP LTD

Porte Marsh Road, Calne, Wiltshire, SN11 9BW

Registered in England No: 2603821

VAT Reg: GB572705729

