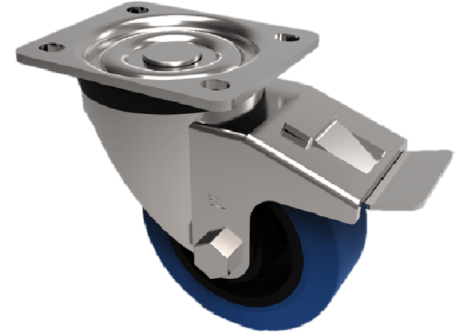


Blue Elastic Rubber 65ShoreA Plate Swivel Castor Brake 100mm 200kg Load

Product code: SSEH100SRNBSWB



Grade 304 Pressed stainless steel swivel castor with a top plate fixing fitted with a 65 shore A blue elastic rubber tyred black nylon centred wheel with a roller bearing and a total lock brake. Wheel diameter 100mm, tread width 36mm, overall height 130mm, top plate 105mm x 86mm, hole centres 80mm x 60mm. Load capacity 200kg

Diameter (mm)	100
Fixing Option	Plate
Castor Type	Swivel with Total Lock Brake
Height (mm)	128
Wheel Material	Rubber on Nylon
Colour / Shore Hardness	Blue Elastic Rubber on Nylon Rim / 65 Shore A
Bearing Type	Roller
Tread (mm)	36
Fork Thickness (mm)	3
To Suit Fixing Bolt (mm)	8
Load Capacity (kg)	200
Temperature Resistance	-30 °C TO +80 °C
Plate Size (mm)	105 x 86
Hole Centres (mm)	80 X 60
Top Plate Thickness (mm)	3
Swivel Radius (mm)	115

BIL GROUP LTD

Porte Marsh Road, Calne, Wiltshire, SN11 9BW

Registered in England No: 2603821

VAT Reg: GB572705729

