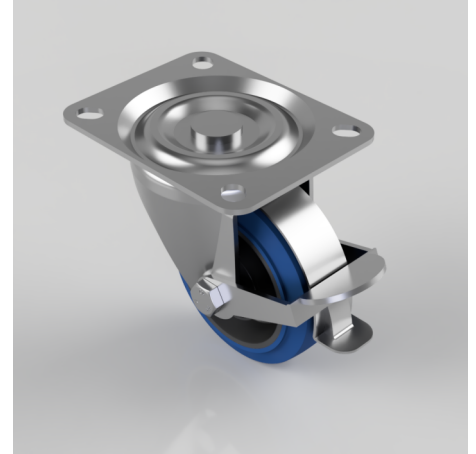


Blue Elastic Rubber 65ShoreA Plate Swivel Castor Brake 100mm 200kg Load

Product code: BZH100SRNBJBRLP

Pressed steel swivel castor with a top plate fixing fitted with a blue 65 shore A elastic rubber tyre on black nylon centred wheel with a single ball bearing and retaining caps and wheel brake. Wheel diameter 100mm, tread width 36mm, overall height 127mm, top plate 130mm x 103mm, hole centres 105mm x 80mm or 100mm x 76mm. Load capacity 200kg.



Diameter (mm)	100
Castor Type	Swivel with Wheel Brake
Fixing Option	Plate
Height (mm)	127
Wheel Material	Rubber on Nylon
Colour / Shore Hardness	Blue Elastic Rubber on Nylon Rim / 65 Shore A
Temperature Resistance	-30 °C TO +80 °C
Bearing Type	Ball
Load Capacity (kg)	200
Tread (mm)	36
Swivel Radius (mm)	106
Plate Size (mm)	128 x 102
Hole Centres (mm)	105/100 x 80/76
Top Plate Thickness (mm)	3
Fork Thickness (mm)	3
To Suit Fixing Bolt (mm)	10

BIL GROUP LTD

Porte Marsh Road, Calne, Wiltshire, SN11 9BW

Registered in England No: 2603821

VAT Reg: GB572705729

