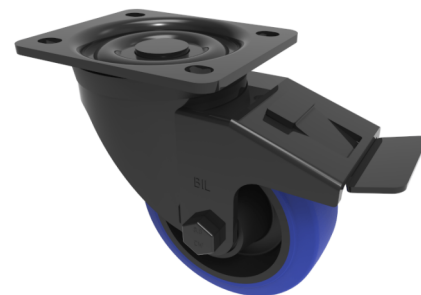


Blue Elastic Rubber 65ShoreA Plate Swivel Castor Brake 125mm 250kg Load

Product code: BLKH125SRNBJSWB



Pressed steel black painted swivel castor with a top plate fixing fitted with a 65 Shore A blue elastic rubber nylon centred wheel with a single ball bearing with retaining caps and a total lock brake. Wheel diameter 125mm, tread width 36mm, overall height 156mm, plate size 105mm x 86mm, hole centres 80mm x 60mm. Load capacity 250kg. REACH compliant also PAH-Free rubber to confirm to EU-directive 2005/69/EC

| | |
|--------------------------|---|
| Diameter (mm) | 125 |
| Castor Type | Swivel with Total Lock Brake |
| Fixing Option | Plate |
| Height (mm) | 155 |
| Wheel Material | Rubber on Nylon |
| Colour / Shore Hardness | Blue Elastic Rubber on Nylon Rim / 65 Shore A |
| Temperature Resistance | -30 °C TO +80 °C |
| Bearing Type | Ball |
| Load Capacity (kg) | 250 |
| Tread (mm) | 36 |
| Swivel Radius (mm) | 115 |
| Plate Size (mm) | 105 x 86 |
| Hole Centres (mm) | 80 X 60 |
| Top Plate Thickness (mm) | 3 |
| Fork Thickness (mm) | 3 |
| To Suit Fixing Bolt (mm) | 8 |

BIL GROUP LTD

Porte Marsh Road, Calne, Wiltshire, SN11 9BW

Registered in England No: 2603821

VAT Reg: GB572705729

