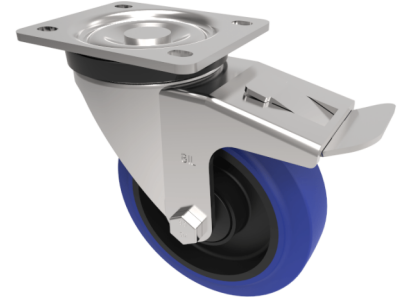


## Blue Elastic Rubber 65ShoreA Plate Swivel Castor Brake 125mm 275kg Load

**Product code: BZWH125SRNBJSWB**



Pressed steel swivel castor with a top plate fixing with a 65 shore A blue elastic rubber tyre wheel with a black nylon centre with ball bearing and a total lock brake. Wheel diameter 125mm, tread width 50mm, overall height 165mm, top plate 105mm x 86mm, hole centres 80mm x 60mm. Load capacity 275kg. REACH compliant also PAH-Free rubber to confirm to EU-directive 2005/69/EC

Diameter (mm)	125
Castor Type	Swivel with Total Lock Brake
Fixing Option	Plate
Height (mm)	166
Wheel Material	Rubber on Nylon
Colour / Shore Hardness	Blue Elastic Rubber on Nylon Rim / 65 Shore A
Temperature Resistance	-30 °C TO +80 °C
Bearing Type	Ball
Load Capacity (kg)	275
Tread (mm)	50
Swivel Radius (mm)	138
Plate Size (mm)	105 x 86
Hole Centres (mm)	80 X 60
Top Plate Thickness (mm)	4
Fork Thickness (mm)	3.5
To Suit Fixing Bolt (mm)	10

### BIL GROUP LTD

Porte Marsh Road, Calne, Wiltshire, SN11 9BW

Registered in England No: 2603821

VAT Reg: GB572705729

