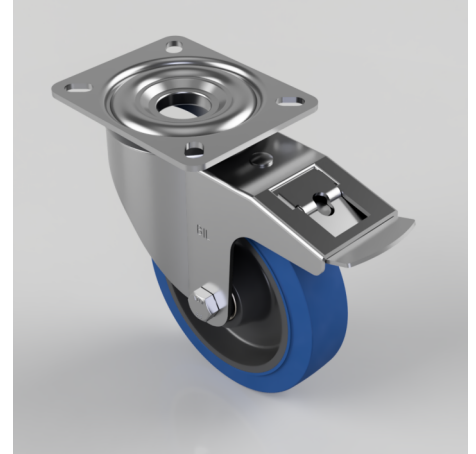


Blue Elastic Rubber 65ShoreA Plate Swivel Castor Brake 150mm 300kg Load

Product code: BZMM150SRNBSWB

Pressed steel swivel castor with a top plate fixing fitted with a blue 65 shore A elastic rubber tyre on a black nylon centred wheel with ball bearings and a total lock brake. Wheel diameter 150mm, tread width 40mm, overall height 190mm, top plate 135mm x 110mm, hole centres 105mm x 80mm. Load capacity 300kg.



Diameter (mm)	150
Castor Type	Swivel with Total Lock Brake
Fixing Option	Plate
Height (mm)	190
Wheel Material	Rubber on Nylon
Colour / Shore Hardness	Blue Elastic Rubber on Nylon Rim / 65 Shore A
Temperature Resistance	-30 °C TO +80 °C
Bearing Type	Ball
Load Capacity (kg)	300
Tread (mm)	40
Swivel Radius (mm)	167
Plate Size (mm)	135 x 110
Hole Centres (mm)	105 x 80
Top Plate Thickness (mm)	4
Fork Thickness (mm)	3
To Suit Fixing Bolt (mm)	10

BIL GROUP LTD

Porte Marsh Road, Calne, Wiltshire, SN11 9BW

Registered in England No: 2603821

VAT Reg: GB572705729

