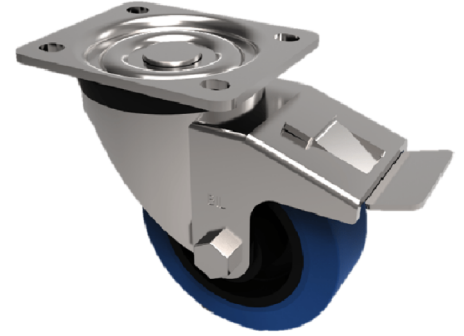


Blue Elastic Rubber 65ShoreA Plate Swivel Castor Brake 160mm 350kg Load

Product code: SSMM160SRNBSWB

Pressed 304 stainless steel swivel castor with a top plate fixing fitted with a blue 65 shore A elastic rubber tyre on a black nylon centred wheel with stainless ball bearings and a total lock brake. Wheel diameter 160mm, tread width 50mm, overall height 195mm, top plate 135mm x 110mm, hole centres 105mm x 80/75mm. Load capacity 350kg.



| | |
|--------------------------|-----------------------------------------------|
| Diameter (mm) | 160 |
| Fixing Option | Plate |
| Castor Type | Swivel with Total Lock Brake |
| Height (mm) | 195 |
| Wheel Material | Rubber on Nylon |
| Colour / Shore Hardness | Blue Elastic Rubber on Nylon Rim / 65 Shore A |
| Bearing Type | Ball |
| Tread (mm) | 40 |
| Fork Thickness (mm) | 2 |
| To Suit Fixing Bolt (mm) | 10 |
| Load Capacity (kg) | 400 |
| Temperature Resistance | -30 °C TO +80 °C |
| Plate Size (mm) | 135 x 110 |
| Hole Centres (mm) | 105 x 80 |
| Top Plate Thickness (mm) | 3 |
| Swivel Radius (mm) | 167 |

BIL GROUP LTD

Porte Marsh Road, Calne, Wiltshire, SN11 9BW

Registered in England No: 2603821

VAT Reg: GB572705729

