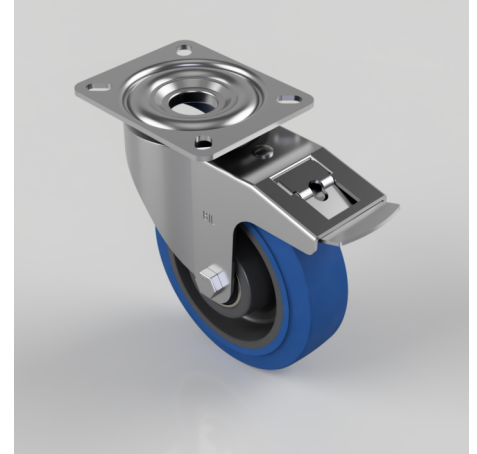


Blue Elastic Rubber 65ShoreA Plate Swivel Castor Brake 160mm 400kg Load

Product code: BZMM160SRNBSWB

Pressed steel swivel castor with a top plate fixing fitted with a blue 65 shore A elastic rubber tyre black nylon centred wheel with a ball bearing and swivel and wheel brake. Wheel diameter 160mm, tread width 50mm, overall height 195mm, top plate 135mm x 110mm, hole centres 105mm x 80mm. Load capacity 400kg.



Diameter (mm)	160
Castor Type	Swivel with Total Lock Brake
Fixing Option	Plate
Height (mm)	195
Wheel Material	Rubber on Nylon
Colour / Shore Hardness	Blue Elastic Rubber on Nylon Rim / 65 Shore A
Temperature Resistance	-30 °C TO +80 °C
Bearing Type	Ball
Load Capacity (kg)	400
Tread (mm)	50
Swivel Radius (mm)	167
Plate Size (mm)	135 x 110
Hole Centres (mm)	105 x 80
Top Plate Thickness (mm)	4
Fork Thickness (mm)	3
To Suit Fixing Bolt (mm)	10

BIL GROUP LTD

Porte Marsh Road, Calne, Wiltshire, SN11 9BW

Registered in England No: 2603821

VAT Reg: GB572705729

