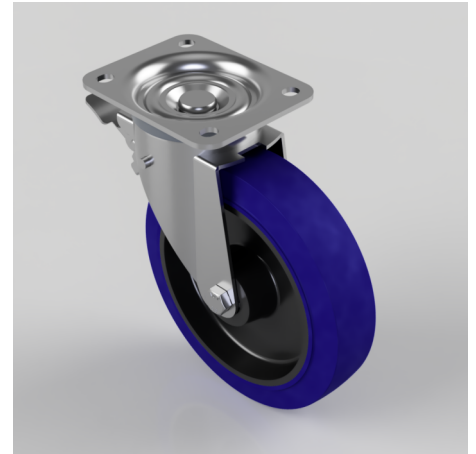


## Blue Elastic Rubber 65ShoreA Plate Swivel Castor Brake 200mm 350kg Load

**Product code: BZWB200SRNBSWB**

Pressed steel swivel castor with a top plate fixing fitted with a blue 65 shore A elastic rubber tyre on a black nylon centred wheel with roller bearings with total lock brake. Wheel diameter 200mm, tread width 50mm, overall height 238mm, top plate 135mm x 110mm, hole centres 105mm x 80/75mm. Load capacity 350kg REACH compliant also PAH-Free rubber to confirm to EU-directive 2005/69/EC



Diameter (mm)	200
Castor Type	Swivel with Total Lock Brake
Fixing Option	Plate
Height (mm)	238
Wheel Material	Rubber on Nylon
Colour / Shore Hardness	Blue Elastic Rubber on Nylon Rim / 65 Shore A
Temperature Resistance	-30 °C TO +80 °C
Bearing Type	Roller
Load Capacity (kg)	350
Tread (mm)	50
Swivel Radius (mm)	157
Plate Size (mm)	135 x 110
Hole Centres (mm)	105 x 80/75
Top Plate Thickness (mm)	4
Fork Thickness (mm)	3
Brake Type	Leading Brake
To Suit Fixing Bolt (mm)	10

### BIL GROUP LTD

Porte Marsh Road, Calne, Wiltshire, SN11 9BW

Registered in England No: 2603821

VAT Reg: GB572705729

