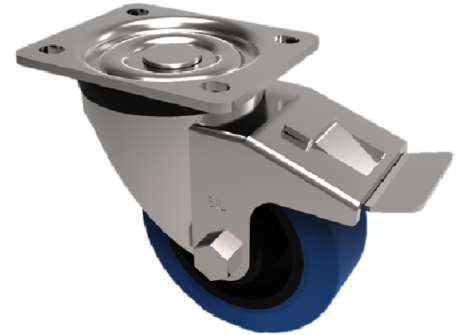


Blue Elastic Rubber 65ShoreA Plate Swivel Castor Brake 200mm 350kg Load

Product code: SSMM200SRNBSWB



Grade 304 Pressed stainless steel swivel castor fitted with a blue 65 shore A elastic rubber tyre on a black nylon centred wheel with ball bearings and a total lock brake . 200mm wheel diameter, 50mm tread width, 235mm overall height, 135mm x 110mm top plate, 105 x 80/75mm hole centres with a load capacity of 350kgs

Diameter (mm)	200
Fixing Option	Plate
Castor Type	Swivel with Total Lock Brake
Height (mm)	235
Wheel Material	Rubber on Nylon
Colour / Shore Hardness	Blue Elastic Rubber on Nylon Rim / 65 Shore A
Bearing Type	Ball
Tread (mm)	50
Fork Thickness (mm)	3
To Suit Fixing Bolt (mm)	10
Load Capacity (kg)	400
Temperature Resistance	-30 °C TO +80 °C
Plate Size (mm)	135 x 110
Hole Centres (mm)	105 x 80
Top Plate Thickness (mm)	3
Swivel Radius (mm)	167

BIL GROUP LTD

Porte Marsh Road, Calne, Wiltshire, SN11 9BW

Registered in England No: 2603821

VAT Reg: GB572705729

