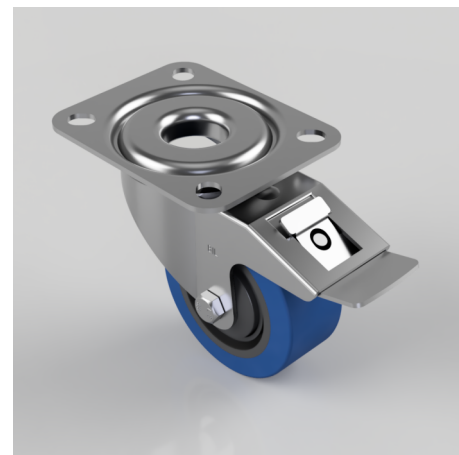


## Blue Elastic Rubber 65ShoreA Plate Swivel Castor Brake 80mm 150kg Load

**Product code: BZMM80SRNBJSWB**

Pressed steel swivel castor with top plate fixing fitted with a 65 shore A blue elastic rubber tyre on black nylon centred wheel with a ball bearing and total lock brake. Wheel diameter 80mm, tread width 35mm, overall height 105mm, top plate 105mm x 80mm, hole centre 80mm x 60mm. Load capacity 150kg. REACH compliant also PAH-Free rubber to confirm to EU-directive 2005/69/EC



|                          |   |
|--------------------------|---|
| Diameter (mm)            | 80  |
| Castor Type              | Swivel with Total Lock Brake                  |
| Fixing Option            | Plate   |
| Height (mm)              | 105   |
| Wheel Material           | Rubber on Nylon                               |
| Colour / Shore Hardness  | Blue Elastic Rubber on Nylon Rim / 65 Shore A |
| Temperature Resistance   | -30 °C TO +80 °C                              |
| Bearing Type             | Ball  |
| Load Capacity (kg)       | 150   |
| Tread (mm)               | 35  |
| Swivel Radius (mm)       | 111   |
| Plate Size (mm)          | 105 X 85                                      |
| Hole Centres (mm)        | 80 X 60                                       |
| Top Plate Thickness (mm) | 2.5   |
| Fork Thickness (mm)      | 2   |
| To Suit Fixing Bolt (mm) | 8   |

## BIL GROUP LTD

Porte Marsh Road, Calne, Wiltshire, SN11 9BW

Registered in England No: 2603821

VAT Reg: GB572705729

