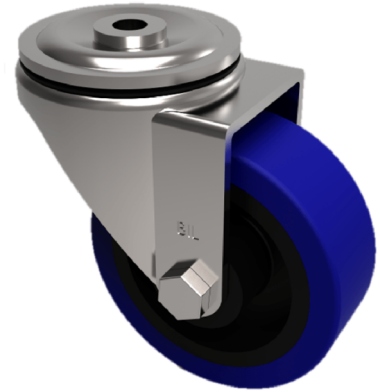


## Blue Elastic Rubber 75ShoreA Bolt Hole Swivel Castor 125mm 200kg Load

**Product code: SSMM125RNBH12**

Grade 304 Pressed stainless steel swivel castor with a 12mm bolt hole fixing fitted with a blue 75 shore A elastic rubber tyre on black nylon wheel with a plain bore. Wheel diameter 125mm, tread width 36mm, overall height 155mm, Load capacity 200kg.



Diameter (mm)	125
Fixing Option	Bolt Hole
Castor Type	Swivel
Height (mm)	155
Wheel Material	Rubber on Nylon
Colour / Shore Hardness	Blue Rubber on Nylon Rim / 75 Shore A
Bearing Type	Plain
Tread (mm)	36
Fork Thickness (mm)	2
To Suit Fixing Bolt (mm)	12
Load Capacity (kg)	200
Temperature Resistance	-20 °C TO +60 °C
Head Dia (mm)	76
Swivel Radius (mm)	95

### BIL GROUP LTD

Porte Marsh Road, Calne, Wiltshire, SN11 9BW

Registered in England No: 2603821

VAT Reg: GB572705729

