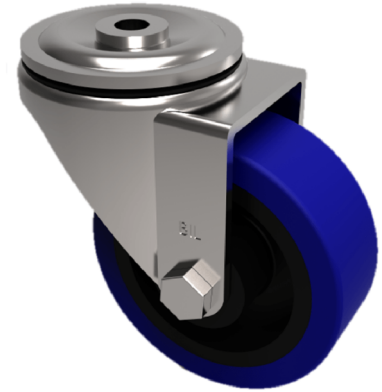


Blue Elastic Rubber 75ShoreA Bolt Hole Swivel Castor 125mm 250kg Load

Product code: SSEH125RNBH12



Grade 304 Pressed stainless steel swivel castor with a 12mm bolt hole fitted with a 75 shore A blue elastic rubber tyred black nylon centred wheel with a plain bore. Wheel diameter 125mm, tread width 40mm, overall height 155mm,. Load capacity 250kg

Diameter (mm)	125
Fixing Option	Bolt Hole
Castor Type	Swivel
Height (mm)	156
Wheel Material	Rubber on Nylon
Colour / Shore Hardness	Blue Rubber on Nylon Rim / 75 Shore A
Bearing Type	Plain
Tread (mm)	40
Fork Thickness (mm)	3
To Suit Fixing Bolt (mm)	12
Load Capacity (kg)	250
Temperature Resistance	-20 °C TO +60 °C
Head Dia (mm)	78
Swivel Radius (mm)	106

BIL GROUP LTD

Porte Marsh Road, Calne, Wiltshire, SN11 9BW

Registered in England No: 2603821

VAT Reg: GB572705729

