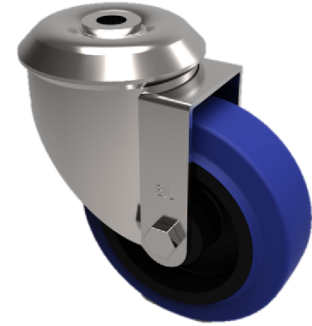


Blue Elastic Rubber 75ShoreA Bolt Hole Swivel Castor 80mm 150kg Load

Product code: BZH80RNBJBH12



Pressed steel swivel castor with a 12mm bolt hole fitted with a 65 shore A blue elastic rubber tyred wheel with a black nylon centre with a ball bearing. Wheel diameter 80mm, Tread width 35mm, Overall Height 110mm,, Load Capacity 150kg. REACH compliant also PAH-Free rubber to confirm to EU-directive 2005/69/EC

Diameter (mm)	80
Castor Type	Swivel
Fixing Option	Bolt Hole
Height (mm)	110
Wheel Material	Rubber on Nylon
Colour / Shore Hardness	Blue Rubber on Nylon Rim / 75 Shore A
Temperature Resistance	-20 °C TO +60 °C
Bearing Type	Ball
Load Capacity (kg)	150
Tread (mm)	35
Swivel Radius (mm)	78
Head Dia (mm)	76
Fork Thickness (mm)	4
To Suit Fixing Bolt (mm)	12