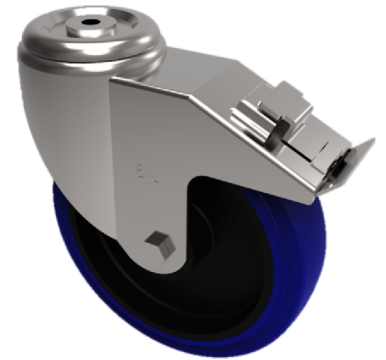


## Blue Elastic Rubber 75ShoreA Bolt Hole Swivel Castor Brake 100mm 160kg

**Product code: SSMM100RNBH12SWB**

Grade 304 Pressed stainless steel swivel castor with a 12mm bolt hole fixing fitted with a blue 75 shore A elastic rubber tyre on black nylon centred wheel with a plain bore and swivel wheel brake. Wheel diameter 100mm, tread width 32mm, overall height 128mm. Load capacity 150kg.



Diameter (mm)	100
Fixing Option	Bolt Hole
Castor Type	Swivel with Total Lock Brake
Height (mm)	128
Wheel Material	Rubber on Nylon
Colour / Shore Hardness	Blue Rubber on Nylon Rim / 75 Shore A
Bearing Type	Plain
Tread (mm)	36
Fork Thickness (mm)	2
To Suit Fixing Bolt (mm)	12
Load Capacity (kg)	160
Temperature Resistance	-20 °C TO +60 °C
Head Dia (mm)	76
Swivel Radius (mm)	118

### BIL GROUP LTD

Porte Marsh Road, Calne, Wiltshire, SN11 9BW

Registered in England No: 2603821

VAT Reg: GB572705729

