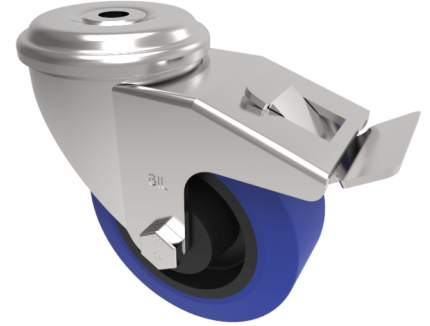


Blue Elastic Rubber 75ShoreA Bolt Hole Swivel Castor Brake 125mm 200kg

Product code: BZEH125LRNBBH12SWB



Pressed steel swivel castor with a bolt hole fixing fitted with a blue 75 shore A elastic rubber tyre on a black nylon centred wheel with a roller bearing and total lock brake. Wheel diameter 125mm, tread width 36mm, overall height 155mm, bolt hole 12mm. Load capacity 200kg.

Diameter (mm)	125
Castor Type	Swivel with Total Lock Brake
Fixing Option	Bolt Hole
Height (mm)	155
Wheel Material	Rubber on Nylon
Colour / Shore Hardness	Blue Rubber on Nylon Rim / 75 Shore A
Temperature Resistance	-20 °C TO +60 °C
Bearing Type	Roller
Load Capacity (kg)	200
Tread (mm)	36
Swivel Radius (mm)	116
Head Dia (mm)	76
Fork Thickness (mm)	3
To Suit Fixing Bolt (mm)	12

BIL GROUP LTD

Porte Marsh Road, Calne, Wiltshire, SN11 9BW

Registered in England No: 2603821

VAT Reg: GB572705729

