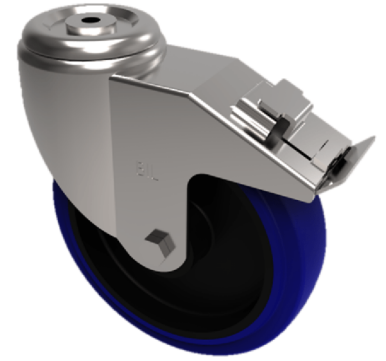


Blue Elastic Rubber 75ShoreA Bolt Hole Swivel Castor Brake 125mm 250kg

Product code: SSEH125RNBBH12SWB

Grade 304 Pressed stainless steel swivel castor with a 12mm bolt hole fitted with a 75 shore A blue elastic rubber tyred black nylon centred wheel with a roller bearing and a total lock brake. Wheel diameter 125mm, tread width 40mm, overall height 155mm, Load capacity 250kg



Diameter (mm)	125
Fixing Option	Bolt Hole
Castor Type	Swivel with Total Lock Brake
Height (mm)	156
Wheel Material	Rubber on Nylon
Colour / Shore Hardness	Blue Rubber on Nylon Rim / 75 Shore A
Bearing Type	Roller
Tread (mm)	40
Fork Thickness (mm)	3
To Suit Fixing Bolt (mm)	12
Load Capacity (kg)	250
Temperature Resistance	-20 °C TO +60 °C
Head Dia (mm)	78
Swivel Radius (mm)	115

BIL GROUP LTD

Porte Marsh Road, Calne, Wiltshire, SN11 9BW

Registered in England No: 2603821

VAT Reg: GB572705729

