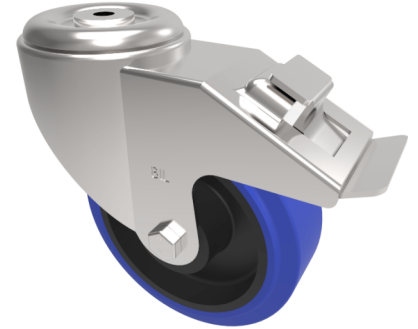


Blue Elastic Rubber 75ShoreA Bolt Hole Swivel Castor Brake 150mm 300kg

Product code: BZMM150RNBBH16SWB



Pressed steel swivel castor with a 16mm bolt hole fitted with a blue elastic rubber wheel on a black nylon centre with a roller bearing and a total lock brake. Wheel diameter 150mm, tread width 50mm, overall height 188mm Load capacity 300kg.

Diameter (mm)	150
Castor Type	Swivel with Total Lock Brake
Fixing Option	Bolt Hole
Height (mm)	188
Wheel Material	Rubber on Nylon
Colour / Shore Hardness	Blue Rubber on Nylon Rim / 75 Shore A
Temperature Resistance	-20 °C TO +60 °C
Bearing Type	Roller
Load Capacity (kg)	300
Tread (mm)	50
Swivel Radius (mm)	168
Head Dia (mm)	114
Fork Thickness (mm)	4
To Suit Fixing Bolt (mm)	16