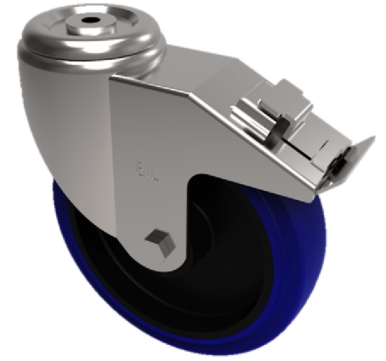


## Blue Elastic Rubber 75ShoreA Bolt Hole Swivel Castor Brake 150mm 300kg

**Product code: BZPHL150RNBBH12SWB**



Pressed steel swivel castor with a 12mm bolt hole fitted with 65 shore A blue elastic rubber tyred black nylon centred wheel with roller bearings and a total lock brake. Wheel diameter 150mm, tread width 40mm, overall height 190mm, Load capacity 300Kg. REACH compliant also PAH-Free rubber to confirm to EU-directive 2005/69/EC

Diameter (mm)	150
Castor Type	Swivel with Total Lock Brake
Fixing Option	Bolt Hole
Height (mm)	190
Wheel Material	Rubber on Nylon
Colour / Shore Hardness	Blue Rubber on Nylon Rim / 75 Shore A
Temperature Resistance	-20 °C TO +60 °C
Bearing Type	Roller
Load Capacity (kg)	300
Tread (mm)	40
Swivel Radius (mm)	130
Head Dia (mm)	76
Fork Thickness (mm)	4
To Suit Fixing Bolt (mm)	12