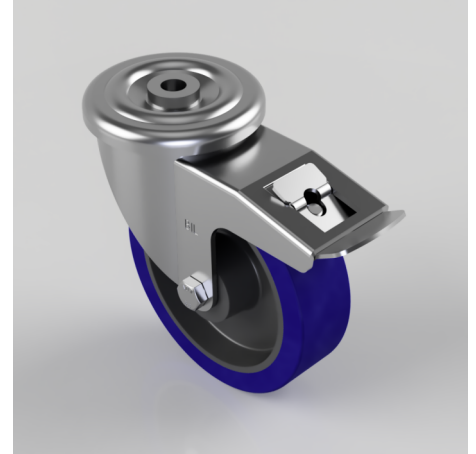


## Blue Elastic Rubber 75ShoreA Bolt Hole Swivel Castor Brake 160mm 300kg

**Product code: BZMM160RNBBH16SWB**

Pressed steel swivel castor with a 16mm bolt hole fitted with a blue 75 shore A elastic rubber tyre on black nylon centred wheel with a roller bearing and total lock brake. Wheel diameter 160mm, tread width 45mm, overall height 193mm, Load capacity 300kg.



Diameter (mm)	160
Castor Type	Swivel with Total Lock Brake
Fixing Option	Bolt Hole
Height (mm)	193
Wheel Material	Rubber on Nylon
Colour / Shore Hardness	Blue Rubber on Nylon Rim / 75 Shore A
Temperature Resistance	-20 °C TO +60 °C
Bearing Type	Roller
Load Capacity (kg)	300
Tread (mm)	45
Swivel Radius (mm)	168
Head Dia (mm)	114
Fork Thickness (mm)	4
To Suit Fixing Bolt (mm)	16